

# **KIP 800 | COLOUR SERIES**



# KIP 800 | COLOUR SERIES

## *A new generation of wide format functionality*

The KIP 800 Colour Series provides a comprehensive solution for a range of wide format printing tasks that require the highest levels of quality and performance. The system's workflow provides powerful print control for any production environment from a range of print submission applications, cloud printing, scan & copy, variable data printing and fully integrated stacking and folding.



| KIP 850

| KIP 860

| KIP 870

| KIP 880-890


# Engineered to deliver **BREAKTHROUGH COLOUR PRINT QUALITY**


while providing real value from high quality images, reliable performance and efficient operation.

Print production on the KIP 800 Colour Series systems produces amazingly vibrant colours, striking graphics, and photographic images that capture subtle tints and hues with unsurpassed colour stability from the first to final print.

All prints and copies generated by the KIP 800 Colour Series systems are fully lightfast, meaning that they will not fade or exhibit colour deterioration from exposure to light over extended periods. The CMYK dry toner system employed by the KIP 800 Colour Series produces 100% waterproof images that are suitable for outdoor applications even in inclement weather.

## Operational Speeds

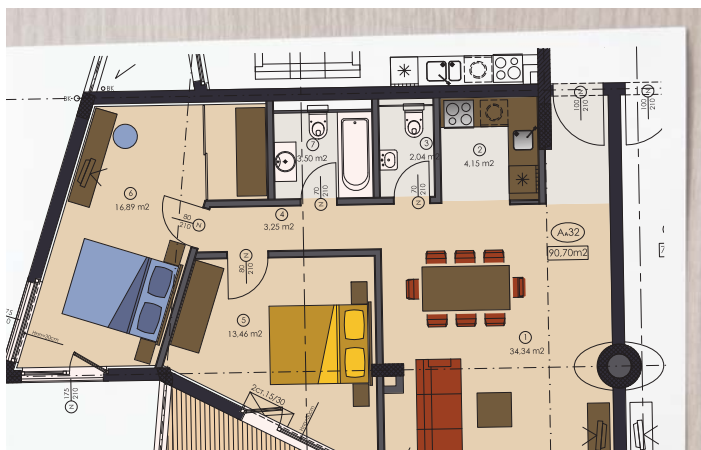
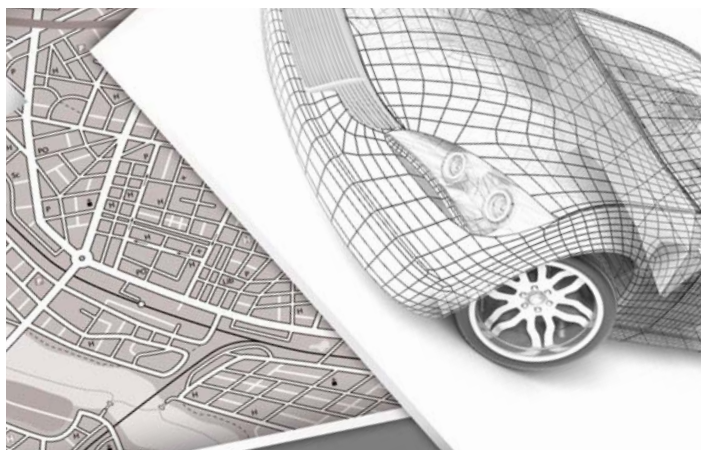
 268 square meters per hour

 268 square meters per hour

## **TECHNICAL DOCUMENT & DISPLAY GRAPHIC CREATION**

The KIP 800 Colour Series systems are designed for technical, graphic and office document users who require high demand output, precise imaging and bold, expressive colour fidelity.

The KIP 800 Colour Series systems are a comprehensive wide format solution for a range of printing tasks spanning from architectural, engineering, and construction documents — to maps, posters, signs, and photo enlargements — without sacrificing quality or performance.



# INTRODUCING KIP 800 COLOUR SERIES

## *the new line of colour print systems*

Explore the new KIP 800 Colour Series. Offering the same compact design and function as the KIP 70 Series, now with colour. The KIP 800 Colour Series saves serious time and money – making ultra high-quality wide format printing more cost effective than ever before. Printing is faster. Operation is simpler. Finishing is automatic. Reliability keeps you up and running. Image quality will keep your customers coming back for more.



## KIP 850

### *Multi-touch colour print system*

#### *Optimise space and productivity!*

The KIP 850 network print system is a space saving workgroup printer delivering fast, low cost colour and black & white wide format documents with breakthrough print quality. Easily meet project timelines and exceed quality standards with consistent print speed and precision imaging. Innovative front stacking allows close wall installation to maximise space efficiency.

#### *Features*

- 2 Roll Network Printer
- 12" Smart System K Touchscreen
- Standard Front Stacking
- Optional Rear Stacking or KIPFold
- KIP System K Print Management Suite
- Windows and AutoCAD Drivers
- Workflow Automation

## KIP 860

### *Multi-function colour system*

#### *Experience exceptional workflow efficiency!*

The KIP 860 is ideal for environments that require convenient multi-function productivity with a single footprint space-saving design. The KIP 860 colour print system provides extraordinary print quality and performance for both colour and black & white wide format printing of technical and business graphics. All system features and functions are at your fingertips using the intuitive touchscreen navigation that automates copy, scan and print functions for single touch productivity.

#### *Features*

- 2 Roll Multi-Function System with Integrated Scanner
- 12" Smart System K Touchscreen
- Standard Front Stacking
- Optional Rear Stacking or KIPFold
- KIP System K Print Management Suite
- Windows and AutoCAD Drivers
- Workflow Automation



## KIP 870

### *Multi-touch production colour print system*

#### *A new level of enterprise performance!*

The KIP 870 workgroup and departmental print system is designed for high demand project requirements, with outstanding performance and reliability. High resolution colour and black & white mixed set production with built-in cost efficiency reporting. Expand the compact front stacking design with versatile rear stacking or folding accessories that increase productivity. Touchscreen convenience offers advanced network cloud access, set printing and system management without a PC workstation.

#### *Features*

- 4 Roll Network Printer
- 12" Smart System K Touchscreen
- Standard Front Stacking
- Optional Rear Stacking or KIPFold
- KIP System K Print Management Suite
- Windows and AutoCAD Drivers
- Workflow Automation

## KIP 880 890

### *Multi-function production colour system*

#### *The ultimate in wide format functionality!*

The KIP 880-890 delivers unmatched multi-function copy, scan and print performance for high demand enterprise workflow. Engineered to deliver vibrant consistent colour quality from first to final print. The integrated dual footprint configuration multitasks scan and print production, saving valuable project time. Smart touchscreen automation simplifies complex copy, scan and print processes for single touch control.

#### *Features*

- 4 Roll Multi-Function System with Integrated Scanner
- KIP 880 includes a KIP 720 CIS Scanner
- KIP 890 includes a KIP 2300 CCD Scanner
- 12" Smart System K Touchscreen
- Standard Front Stacking
- Optional Rear Stacking or KIPFold
- KIP System K Print Management Suite
- Windows and AutoCAD Drivers
- Workflow Automation

# KIP 800 COLOUR SERIES

## *features designed for effortless operation*

- Colour and Black & White Print Production
- Integrated Folding, Finishing & Stacking Systems
- Automatic Roll Trimming
- Quick Switch Technology
- Integrated USB Port for External Drives
- Production at Remarkable Print & Scan Speeds
- Media Load Assist
- Extended Print Lengths for Maximum Productivity
- Automatic Image Calibration for Precise Colour Output
- Technical Document and Display Graphic Creation
- Large Capacity Toner Cartridges for Continuous Print Runs and Productivity



### System K Software

The KIP 800 Colour Series increases productivity while simplifying the user experience with touch tablet navigation, diverse software suite with ribbon command bars and system standardised icons, along with cloud integration.



### Large Capacity Toner

Each CMYK cartridge contains 1,000 gsm of toner for a total capacity of 4,000 gsm - allowing longer uninterrupted colour and black & white print runs for continuous system productivity.



### Automatic Calibration

An exclusive single belt drive system performs automatic calibrations for precise imaging and bold, expressive colour output. This simplifies changing media types.



### Extended Print Lengths

The KIP 800 Colour Series handles long print images on a variety of media types from either of its 2 or 4 integrated roll decks for maximum productivity and operator efficiency.



### Quick Switch Technology

The KIP 800 Colour Series print technology eliminates roll switching delays for increased productivity. Two or 4 media rolls and a sheet feeder deliver mixed print sizes at full production speed.



### Colour and B&W Printing

The KIP 800 Series colour and black & white LED production printing systems are based on a unique design that lowers the operational costs and quickly switches between colour and black & white production.



### Media Load Assist

An ergonomic roll cap system simplifies the process of loading the 278 or 557 square meters media capacity.



### Production Printing

The KIP 800 Colour Series print systems offer superb resolution at remarkable print speeds of up to 268 square meters per hour, in either colour or black & white.

# KIP 800 Colour Series Accessories

---

## Stacker

---

The KIP 800 Colour Series integrated stacking systems improve the efficiency and productivity of your print production environment by providing a convenient place to neatly stack a multitude of various page sizes. Unattended print runs can be scheduled with peace of mind due to comprehensive internal diagnostics of the KIP 800 Colour Series.

*Optional for KIP 850, 860, 870, 880-890*



## KIPFold 1000

---

The KIPFold 1000 is a compact, but powerful online folder designed to easily, conveniently and quickly fan-fold documents. Folded document packets are crisp, professional and ready for distribution. Unfolded documents are directed to the conveniently located integrated front stacker.

*Optional for KIP 850 or 860*



## KIPFold 2000

---

The KIPFold 2000 system automates wide format document folding requirements by providing folding, stacking and collation in a compact design. KIP online folders intelligently communicates with KIP printers and are fully integrated with KIP software applications & print drivers to provide seamless workflow integration.

*Optional for KIP 850, 860, 870, 880-890*



## Copying & Scanning

---

The KIP 800 Colour Series provide efficient, high speed hard copy reproduction workflow. Exceptional image quality is achieved through true 600 x 600 dpi optical resolution via a choice of integrated KIP scanners, with advanced optics and delicate original transport processes for pixel-perfect images.

*Integrated scanner included with KIP 860*

*KIP 720 scanner available with KIP 880*

*KIP 2300 scanner available with KIP 890*



# KIP 800 COLOUR SERIES

*functions available at  
your fingertips.*

KIP System K Software Suite provides an enhanced user experience and exceptional productivity for the seamless control of colour and black and white print demands.



## *Experience the most intuitive interface*

The KIP 800 Colour Series systems feature a diversified software suite that forms the most integrated and powerful wide format colour and black & white imaging system available.

From PC & web-based viewing, and printing of documents in a wide range of formats, to professional colour management, application drivers, touchscreen & cloud printing, KIP System K Software streamlines production print work, saves time and increases productivity.

## *KIP System K features & benefits*

- Touchscreen tablet navigation
- Standardised system icons with tile interface
- Print submission applications with systems management, configuration and systems status
- Software applications feature ribbon command bar with extended choice of functions
- SNMP protocols, cost center control and cloud collaboration
- System K Windows® Driver, WHQL certified, touch PC compliant with simplified / advanced functions and systems status





## KIP System K Multi-Touch Screen

KIP Multi-Touch Touchscreen	Vivid 12" Colour Multi-Touch Display   Fully Articulating Viewing Angle   Print, Copy and Scan in Black & White and Full Colour   Super View for Swipe, Pinch, Spread and Rotate   Print Directly from Removable Media, the Cloud and Local Mailboxes   Full Colour User Guides   Integrated Copy, Scan & Print Previews with comprehensive AOI functions   On-screen Set Copy Editor   Manage History Queue   User Templates   System Presets for Company Standards
KIP Colour and Black & White Copy & Print Plus	Full Size Preview with Super View   Comprehensive AOI functions using modern touch gestures   Simultaneous Operation of Colour and Black & White Functions   Real Time Image Preview   Full Screen Colour Preview   Advanced Colour Image Enhancement
KIP Cloud Connect	Select from Multiple Cloud Services   Print from KIP Cloud Connect   Scan to KIP Cloud Connect   Unlimited Cloud Connections   Single or Multiple Files   Choose Files from Multiple Cloud Services for Single Print Job   Easy Configuration from Multi-Touch Screen   Collated Sets Printing

## KIP System K Print Drivers

Windows® Driver	Fast Spooling for Multiple Copies or Sets   Displays Real Time System Status   Set Collation   Provides Current Media Information   Media Selection   Secure PIN Printing   Send Job on Hold   Save / Load Templates   Brightness Adjustment   Unlimited Image Quality Presets   Pens, Dithers, Page Sizes, Fold Patterns, and Scaling System Preset Selection
AutoCAD Driver	Fully Compatible with Current Versions of AutoCAD   True HDI AutoCAD Driver   32 and 64 Bit Operating System Compatibility   Real Time Media and System Status   Custom Media Size Configuration   Media Saving by Auto Rotation and Advanced Roll Selection   Advanced Colour Mode Image Type Selection   Pens, Dithering, Page Sizes, Fold Patterns, and Scaling System Preset Selection

## KIP Data Security Features

KIP Data Security	Image Overwrite   Removable Hard Disk Drive Accessory Kit   Operating System: Windows® Standard Embedded 7   Standard Security Updates   Data Encryption and Virus Scanning Applications   KIP Secure Print   SSL Communications
-------------------	--

## KIP System K Print Submission

KIP PrintPro	Multiple Copies or Collated Sets   WYSIWYP Image Preview   Individual File Settings for Job Matrix Templates   Multi-Page Settings   Colour Adjustments and Filter Selections   Email Notification   Customise Job Build Matrix Windows   Document Folding and Stamping   HPGL Pen Preset Selection   For Windows® 7/8/10 and Vista Compatible (32 and 64 Bit) PC's   Customise System and Folder Presets   Manage Print Queue   KIP Secure Print
KIP PrintPro.net	Multiple Copies or Collated Sets   WYSIWYP Image Preview   Individual File Settings for Job Matrix Templates   Multi-Page Support   Colour Adjustments and Filter Selections   Email Notification   Document Folding and Stamping   HPGL Pen Preset Selection   Transfer Files from KIP Printer Mailbox   Compatible with Microsoft Internet Explorer (v. 10 and up), Google Chrome (v. 44 and up), Mozilla® Firefox, Edge, Opera and Apple Safari   Customise System and Folder Presets   Manage Print Queue and User Settings   KIP Secure Print
KIP GraphicPro	Unlimited Workstation Licenses   Black & White, Grayscale and Colour Printing   Job Editor for Mixed Black & White and Colour Sets   Multi-Page PDF/TIF   Filter Editor for Colour Control   ICC Profile Support for CMYK and RGB Colour Management   Factory /Custom Media Profiles   Nesting Single and Multiple Images   Automatic Horizontal and Vertical Paneling   Area of Interest (Zoom to Area and Print)   Black & White and Colour Editing Tools   Job Monitor   For Windows 7/8/10 and Vista Compatible (32 and 64 bit) PC's
KIP Smart Print & Scan	Submit Print Ready Files via Email Attachments   Works with any Web Enabled KIP Printer   Print Black & White or Colour Documents   Scan Full Size Documents to Email   Choose an Area of Interest   Remote Scan Auto-Archived or Printed by KIP Printer   Optional Keywords Provide Expanded Flexibility

## KIP System K Accounting / Administrative

KIP Accounting Center	Username and Two Customisable Fields   Import User Data Using LDAP   Clear Fields after each Job Submission   ASCII Import/Export   Easily Update User, Project and Department Data   Password Protect any or all Data Entries   No Special Data Servers Required   PC Based Windows 7/8/10 and Vista Application
KIP Cost Center	Integrated with all KIP Apps and Touchscreen Systems   Track Colour and Black & White Copy, Scan and Print   Easy to Understand Graphical Reports   Average Toner Coverage by Percent   Daily Print and Scan Volume for Colour and Black & White   User, Project and Department Categories   Access the Details of the Last 100 Jobs   KIP Toner Costs by Colour and Black & White   KIP Maintenance Costs   KIP Scanner Costs by Colour and Black & White   PC Based Windows 7/8/10 and Vista Application
KIP Card Reader Systems	Contactless Card System Integration: Standard FeliCa Cards   Various Contactless NFC Tokens and Cards   NFC Forum – Certified Card Reader   User Authentication Linked to Card/NFC Token   Release User Jobs at Touchscreen   KIP Accounting Center Integration   Common Access Card Solution: Enables/Disables Network Access   Designed for Easy Installation   Meets Homeland Presidential Security Directive (HSPD-12)   Local and Network User Authentication Using LDAP or Active Directory   Netgard MFD In-Line Network Appliance
KIP Printer Status / SNMP	SNMP Communication to KIP Printer   PC Based Windows 7/8/10 and Vista Application   Monitor Status of KIP Printers   Auto Detect KIP Printer (LAN) IPv4 & IPv6   Visual Notification for Machine Status   View all KIP Printers on a Single Screen   Automated Meter Read

## KIP Print Management Solutions

Touchscreen Technical Interface	The KIP Touchscreen Technical Interface is an integrated comprehensive program for the control of KIP Systems, Installation & Technical Support. Utilise tablet style controls to provide comprehensive and easy access to functions such as automatic adjustments, program updates and printer status, reducing the duration of on-site support and improving productivity.
KIP Custom Media Manager	Accessed by web browser, the KIP Custom Media Manager allows unlimited operator control of media types based on media name, project or job identification.

# KIP 800 Colour Series Specifications

2/4 Roll Colour and Black & White Printer	Colour and black & white printer with intelligent KIP System K touchscreen
2/4 Roll Colour and Black & White Print/Copy/STF	Colour and black & white printer with intelligent KIP System K touchscreen for Print/Copy and STF functions
System Scanners	KIP 860: KIP 720 embedded / KIP 880: KIP 720 CIS Scanner / KIP 890: KIP 2300 CCD Scanner
Scanner Stand	KIP 720 / KIP 2300 Scanner Stand (for the KIP 880-890 or optional for stand-alone scan applications)
Stacking Systems (standard)	Front Stacking Print Tray
Finishing Systems (optional)	KIP 800 Stacker, KIPFold 2000 (all models) or KIPFold 1000 (exclusive for KIP 850 / KIP 860)
Description	High production colour and black & white wide format print/copy/scan
Type	LED Array Electro photography with organic photoconductor (OPC drum) Contact Development using non magnetic mono-component toner
Configurations	Printer or multi-function system (print/copy/scan)
Speed	Up to 268 sq. m per hour in either black & white or colour regardless of image type or print resolution
Warm Up Time	Instant from standby, less than 6 minutes from power on
Toner	Four colour (CMYK), dry toner, print images are UV resistant and waterproof
Input Power	EU/UK: 220-240 V, 50/60 Hz, 16 A
Power Consumption	Ready: 0.6 kWh. Printing: 1.9 kWh, Warm Up: 3.4 kWh, Sleep Mode: 3 Wh
Acoustic Noise	< 65 db Printing
Ozone	< 0.05 ppm (average of 8 hours)
Dimensions	KIP 850 1500 x 1080 x 1015 mm (W x D x H) KIP 860 1500 x 1080 x 1155 mm (W x D x H) KIP 870 1500 x 1080 x 1220 mm (W x D x H) KIP 880-890 1970 x 1080 x 1220 mm (W x D x H)
Weight	KIP 850 485 kg KIP 860 510 kg KIP 870 530 kg KIP 880 556 kg Weight of the KIP 880-890 is dependent on the scanner model – KIP 720 noted

## Printer

Print Resolution	600 x 2,400 dpi
Paper Capacity	280 sq m ( 2 rolls + cut sheet ) 560 sq m ( 4 rolls + cut sheet )
Output Sizes Width (roll media)	297 mm - 914 mm
Output Sizes Length (roll media)	210 mm minimum, 64 m maximum (actual length may be dependent on media type and file type limitations)
Paper Weight (roll media)	Bond: 67 – 150 gsm, Film: 3 – 4 mil Double Matte Polyester, Tracing: 67 – 75 gsm Banner and Gloss: see KIP 800 Media Guide
Sheet Bypass	Up to 150 gsm bond / Maximum sheet size 914 mm x manageable length / Minimum sheet size A3
Media Types	Bond Paper: Economical Bond, Standard Bond. Specialty Bond paper: Presentation Bond, Heavy Weight Bond. Polyester Film: 3 mil Clear, 3 mil Double Matte, 4 mil White Opaque. Banner Media: Fusion Soft Polyester. Please see the KIP 800 Series Media Guide for details.

## Scanner / Copier

Resolution	600 dpi (optical)
Original	Single Sheet, image viewable / face up
Widths	210 mm - 914 mm (international standard page sizes to include ANSI, ARCH, ISO A & B, CHN, JPN)
Length	210 mm – 6 m
Please see the KIP 2300 Scanner documentation for details on this optional scanner for the KIP 890 Colour System	

## Controller

Controller Type	System K Embedded, Windows Standard Embedded 7 – 64 bit, i5 Quad Cord (min)
Memory	4 GB (min)
Compatible File Formats	Raster Colour: TIFF, JPG, JPG2000, PNG, BMP, GIF, TGA, RLE/RLC Vector Colour/B&W: HPGL, HPGL/2, HP-RTL, Postscript (PS/EPS), Adobe PDF, Autodesk DWF, Multipage PDF & DWF Raster B&W: TIFF Group 3 & 4, CALS Group 4, Grayscale TIFF Vector B&W: Calcomp 906/907

## Space, Electrical & Environmental Requirements

Total Space (minimum)	3350 x 2600 mm ( W x D ) ( KIP 850, 860 & 870 ) 4500 x 2600 mm ( W x D ) ( KIP 880 with KIP 720 ) 3350 x 5190 mm ( W x D ) ( KIP 850, 860 & 870 with optional rear print stacker ) 4500 x 5190 mm ( W x D ) ( KIP 880 with KIP 720 with optional rear print stacker ) The flexibility of the KIP 880-890 system permits the scanner to be placed perpendicular or parallel to the KIP printer for individual workflows, which can result in special requirements that may differ than noted above. System access through standard door frames without lifting or tilting.
Electrical Requirements	KIP 850, 860 & 870 EU/UK: 220-240 V, 50/60 Hz, 16 A KIP 880-890 EU/UK: Two - 20-240 V, 50/60 Hz, 16 A (one for KIP Printer and one for KIP Scanner)
Electrical Receptacle	Europe = CEE 7 (x2 for KIP 880-890) UK = BS 546 (x2 for KIP 880-890) All other regions = please refer to your local standards
Network Port	RJ-45 port-CAT5 or higher. LAN rated at least at 100mb. Recommended is 1000 mb
Room Temperature	10-30 °C
Humidity	15-80% RH
Site Survey	KIP 800 Colour Series site survey documentation is to be completed prior to system installation

# THE COLOUR OF KIP IS GREEN.

KIP is committed to product designs that promote environmental health and sustainability. KIP's goal is to consistently improve and refine the technologies in products that keep our planet green. KIP considers the total product life cycle - from the manufacturing process to final device disposal in our shared ecosystems.



## LOW EMISSIONS – HIGH EFFICIENCY

- KIP products all have a variety of sleep modes and power usage timers to reduce power consumption. All KIP systems are Energy Star qualified.
- During operation, the power consumption of KIP products are one of the lowest in the industry thanks to efficiency in design.
- KIP's manufacturing processes have reduced electricity consumption by 33%, all while increasing productivity.



[KIP.COM/GREEN](http://KIP.COM/GREEN) | FOR MORE INFORMATION





[WWW.KIP.COM](http://WWW.KIP.COM)

KIP is a registered trademark of the KIP Group. All other product names mentioned herein are trademarks of their respective companies. All product features and specifications are subject to change without notice. Complete product specifications are available upon request. © 2015

## KIP 800 Colour Series Specifications

2/4 Roll Colour and Black & White Printer	Colour and black & white printer with intelligent KIP System K touchscreen	
2/4 Roll Colour and Black & White Print/Copy/STF	Colour and black & white printer with intelligent KIP System K touchscreen for Print/Copy and STF functions	
System Scanners	KIP 860: KIP 720 embedded / KIP 880: KIP 720 CIS Scanner / KIP 890: KIP 2300 CCD Scanner	
Scanner Stand	KIP 720 / KIP 2300 Scanner Stand (for the KIP 880-890 or optional for stand-alone scan applications)	
Stacking Systems (standard)	Front Stacking Print Tray	
Finishing Systems (optional)	KIP 800 Stacker, KIPFold 2000 (all models) or KIPFold 1000 (exclusive for KIP 850 / KIP 860)	
Description	High production colour and black & white wide format print/copy/scan	
Type	LED Array Electro photography with organic photoconductor (OPC drum) Contact Development using non magnetic mono-component toner	
Configurations	Printer or multi-function system (print/copy/scan)	
Speed	Up to 268 sq. m per hour in either black & white or colour regardless of image type or print resolution	
Warm Up Time	Instant from standby, less than 6 minutes from power on	
Toner	Four colour (CMYK), dry toner, print images are UV resistant and waterproof	
Input Power	EU/UK: 220-240 V, 50/60 Hz, 16 A	
Power Consumption	Ready: 0.6 kWh. Printing: 1.9 kWh, Warm Up: 3.4 kWh, Sleep Mode: 3 Wh	
Acoustic Noise	< 65 db Printing	
Ozone	< 0.05 ppm (average of 8 hours)	
Dimensions	KIP 850 1500 x 1080 x 1015 mm (W x D x H)	
	KIP 860 1500 x 1080 x 1155 mm (W x D x H)	
	KIP 870 1500 x 1080 x 1220 mm (W x D x H)	
	KIP 880-890 1970 x 1080 x 1220 mm (W x D x H)	
Weight	KIP 850 485 kg      KIP 860 510 kg	
	KIP 870 530 kg      KIP 880 556 kg	
	Weight of the KIP 880-890 is dependent on the scanner model – KIP 720 noted	

## Printer

Print Resolution	600 x 2,400 dpi
Paper Capacity	300 sq m ( 2 rolls + cut sheet ) 600 sq m ( 4 rolls + cut sheet )
Output Sizes Width (roll media)	297 mm - 914 mm
Output Sizes Length (roll media)	210 mm minimum, 64 m maximum (actual length may be dependent on media type and file type limitations)
Paper Weight (roll media)	Bond: 67 – 150 gsm, Film: 3 – 4 mil Double Matte Polyester, Tracing: 67 – 75 gsm Banner and Gloss: see KIP 800 Media Guide
Sheet Bypass	Up to 150 gsm bond / Maximum sheet size 914 mm x manageable length / Minimum sheet size A3
Media Types	Bond Paper: Economical Bond, Standard Bond. Specialty Bond paper: Presentation Bond, Heavy Weight Bond. Polyester Film: 3 mil Clear, 3 mil Double Matte, 4 mil White Opaque. Banner Media: Fusion Soft Polyester. Please see the KIP 800 Series Media Guide for details.

## Scanner / Copier

Resolution	600 dpi (optical)
Original	Single Sheet, image viewable / face up
Widths	210 mm - 914 mm (international standard page sizes to include ANSI, ARCH, ISO A & B, CHN, JPN)
Length	210 mm – 6 m
Please see the KIP 2300 Scanner documentation for details on this optional scanner for the KIP 890 Colour System	

## Controller

Controller Type	System K Embedded, Windows Standard Embedded 7 – 64 bit, i5 Quad Cord (min)
Memory	4 GB (min)
Hard Drive	320 GB minimum unlimited upgrade
Compatible File Formats	Raster Colour: TIFF, JPG, JPG2000, PNG, BMP, GIF, TGA, RLE/RLC Vector Colour/B&W: HPGL, HPGL/2, HP-RTL, Postscript (PS/EPS), Adobe PDF, Autodesk DWF, Multipage PDF & DWF Raster B&W: TIFF Group 3 & 4, CALS Group 4, Grayscale TIFF Vector B&W: Calcomp 906/907

## Space, Electrical & Environmental Requirements

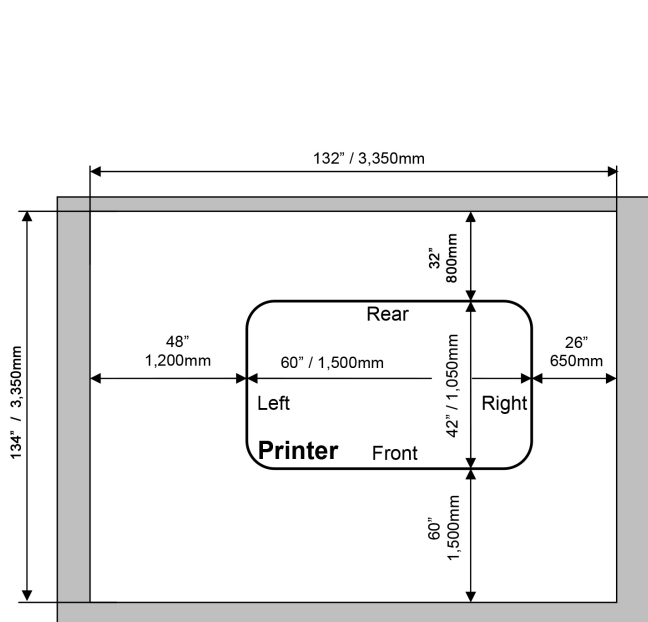
Total Space (minimum)	3350 x 2600 mm ( W x D ) ( KIP 850, 860 & 870 )	
	4500 x 2600 mm ( W x D ) ( KIP 880 with KIP 720 )	
	3350 x 5190 mm ( W x D ) ( KIP 850, 860 & 870 with optional rear print stacker )	
	4500 x 5190 mm ( W x D ) ( KIP 880 with KIP 720 with optional rear print stacker )	
The flexibility of the KIP 880-890 system permits the scanner to be placed perpendicular or parallel to the KIP printer for individual workflows, which can result in special requirements that may differ than noted above. System access through standard door frames without lifting or tilting.		
Electrical Requirements	KIP 850, 860 & 870 EU/UK: 220-240 V, 50/60 Hz, 16 A KIP 880-890 EU/UK: <i>Printer</i> : 220-240v 50/60hz 16A   <i>Scanner</i> : 220-240V 50/60hz 13A	
Electrical Receptacle	Europe = CEE 7 (x2 for KIP 880-890) UK = BS 546 (x2 for KIP 880-890) All other regions = please refer to your local standards	
Network Port	RJ-45 port-CAT5 or higher. LAN rated at least at 100mb. Recommended is 1000 mb	
Room Temperature	10-30°C	
Humidity	15-80% RH	
Site Survey	KIP 800 Colour Series site survey documentation is to be completed prior to system installation	

# KIP 800 Colour Series Installation Requirements

The following conditions are required for installation of the equipment.

1. Power source should be as follows (according to your region).  
U.S.A. / Europe — 220 to 240V (+6% to -10%), 20A, 50/60Hz
2. The equipment must be on an exclusive circuit. The outlet must be near the equipment and easy accessible.
3. Make sure to connect this equipment to an earthed outlet.
4. The site temperature range = 10 to 30 degrees centigrade (50 to 86 degrees Fahrenheit), with the humidity between 15% to 80% RH (NON CONDENSING). Keep the equipment away from water sources, boilers, humidifiers or refrigerators.
5. The installation site must not have open flames, dust or ammonia gases.
6. The equipment should not be exposed to the direct sunlight. Please draw curtains to block any sunlight.
7. Ozone will be generated while this equipment is in use, although the quantity generated is within safe levels (see certifications). Ventilate the room, if required.
8. Leveling bolts on the bottom of the printer should touch the floor correctly and the equipment must be leveled. Floor strength must be ample to sustain the weight of the equipment.
9. Keep ample room around the equipment to ensure comfortable operation. Required space is noted.

**KIP 850 / 860 / 870 FRONT DELIVERY**



**KIP 850 / 860 / 870 FRONT & REAR DELIVERY**

